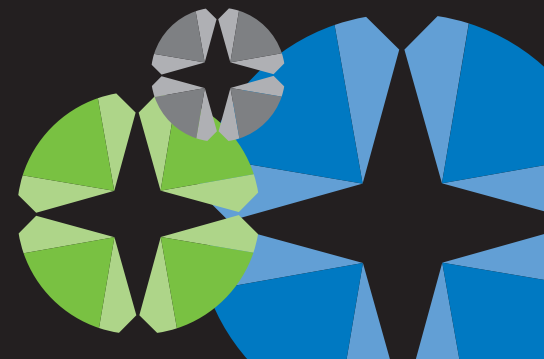




Spec Sheet



Without Acceleration (x700)

Model	1760		2760			4760							6710			8760					
	Small Branch Office					Medium/Large Branch Office							Headquarters/Data Center								
Licensed Bandwidth	2	10	2	10	20	2	10	15	20	45	100	155	100	250	500	100	250	500	1G	2.5G*	
Device Throughput (Mbps)	1000	1000	1000	1000	1000	1000	1000	1000	1000	1000	1000	1000	1000	1000	1000	10000	10000	10000	10000	10000	
Max. Concurrent Flows	16000	16000	32000	32000	32000	64000	128000	128000	256000	256000	384000	512000	512000	768000	1024000	2048000	2048000	2048000	2048000	2048000	
L7 New Conn Rate (max)	20	20	30	30	30	300	300	300	300	300	300	300	400	400	400	6000	6000	6000	6000	6000	
Reports (PDF)	1	1	4	4	4	4	6	8	10	16	20	20	32	32	68	80	80	80	80	80	
SLAs	5	10	10	10	20	70	100	100	120	120	150	150	100	250	250	250	250	250	250	250	
ARM Objects	3	3	2	5	5	5	5	5	10	10	20	20	20	30	40	30	40	50	50	50	
Policies	64	64	64	128	128	128	256	256	384	384	512	512	1024	1536	2048	2048	2048	2048	2048	2048	
Hardware																					
Network Interfaces	Total 6 6x10/100/1000 Copper		Total 6 6x10/100/1000			Expands to 10 10/100/1000/10000 Copper/Fiber							Expands to 10 10/100/1000/10000 Copper/Fiber			Expands to 18 10/100/1000/10000 Copper/Fiber					
Ethernet Bypass Pairs	2		2			1							2			1					
Network Expansion (optional)	No		No			Yes							Yes			Yes					
Console Port	RS-232 male DB-9		RS-232 male DB-9			RS-232 male DB-9							1 x COM Port (RJ-45)			RS-232 male DB-9					
Dual Power Supplies	No		No			No							Yes			Yes					
RAID HDD	No		No			No							No			RAID 10					
Weight	5 kg/11 lb		5 kg/11 lb			11.8 kg / 26 lb							18 kg / 39.68 lb			26.1 kg / 57.52 lb					
Dimensions (wxhxd)	431 x 44 x 277 mm 17" x 1.7" x 10.9"		431 x 44 x 277 mm 17" x 1.7" x 10.9"			424 x 43.5 x 380 mm 16.8" x 1.72" x 11"							424 x 88 x 530 mm 16.8" x 3.45" x 20.9"			424 x 88 x 530 mm 16.8" x 3.45" x 20.9"					
Rack Mount Rails	Not Required		Not Required			Rails Sold Separately							Rack Rails Included			Rack Rails Included					
Power & Environment																					
Power	Single Power Supply (150W) Auto Ranging (100V~240V)		Single Power Supply (150W) Auto Ranging (100V~240V)			Single power supply (345W) Auto Ranging (100V~240V)							DC maximum requirement 230W AC/DC, 90~254 VAC full range 47~63 Hz			Dual power supply (570W) - Redundant Auto Ranging (100V~240V)					
Environment	0-40C, storage temp 20-80C relative humidity 0-90% (non-condensing)					0-40C, storage temp 20-80C relative humidity 0-90% (non-condensing)							0-40C, storage temp 20-80C relative humidity 0-90% (non-condensing)			0-40C, storage temp 20-80C relative humidity 0-90% (non-condensing)					
Approvals	CF, FCC Certified / RoHS					CF, FCC Certified / RoHS							CF, FCC Certified / RoHS			CF, FCC Certified / RoHS					

* 5 Gbps aggregate

With Acceleration (x800)

Model	2860			4860					6810			8860	
	Small Branch Office			Medium/Large Branch Office					Headquarters/Data Center				
Licensed Bandwidth	1	2	6	1	2	6	10	20	10	20	45	100	155
WAN Control & Visibility Bandwidth (Mbps)	10	10	10	2	15	15	45	100	100	500	500	1000	1000
Device Throughput (Mbps)	1000	1000	1000	1000	1000	1000	1000	1000	1000	1000	1000	10000	10000
Max. Concurrent Flows	32000	32000	32000	32000	64000	128000	256000	384000	256000	384000	384000	512000	512000
L7 New Conn Rate (max)	30	30	30	300	300	300	300	300	400	400	400	6000	6000
Reports (PDF)	4	4	4	4	6	8	10	12	20	32	32	40	40
SLAs	10	10	20	40	60	80	100	120	100	250	250	400	400
ARM Objects	2	5	5	5	5	5	5	10	20	32	32	25	25
Policies	64	128	128	128	128	256	256	384	1024	1536	1536	2048	2048
Application Acceleration													
Accelerated TCP Connections	50	100	150	300	400	600	800	1000	800	1200	1500	2000	3000
CIFS Acceleration	■	■	■	■	■	■	■	■	■	■	■	■	■
Compression	■	■	■	■	■	■	■	■	■	■	■	■	■
WAFS Functionality	■	■	■	■	■	■	■	■	■	■	■	■	■
WAN Memory (Differencing)	■	■	■	■	■	■	■	■	■	■	■	■	■
Hardware													
Network Interfaces	10/100/1000 Copper			10/100/1000/10000 Copper/Fiber					10/100/1000/10000 Copper/Fiber			10/100/1000/10000 C/F	
Ethernet Bypass Pairs	2			1					2			1	
Network Expansion (optional)	-			2					2			4	
Console Port	RS-232 male DB-9			RS-232 male DB-9					1 x COM (RJ-45)			RS-232 male DB-9	
Dual Power Supplies	No			No					Yes			Yes	
RAID HDD	No			No					No			RAID 10	
Weight	5 kg / 11 lb			11.8kg / 26 lb					18 kg / 39.68 lb			26.1 kg / 57.52 lb	
Dimensions (wxhxd)	431 x 44 x 277 mm 17" x 1.7" x 10.9"			447 x 43 x 546 mm 17.6" x 1.67" x 21.5"					424 x 88 x 530 mm 16.7" x 3.46" x 20.9"			443 x 86 x 681 mm 17.44" x 3.40" x 26.80"	
Rack Mount Rails	Not Required			Rails Sold Separately					Rack Rails Included			Rack Rails Included	
Power & Environment													
Power	Single power supply (150W) Auto Ranging (100V~240V)			Single power supply (345W) Auto Ranging (100V~240V)					DC Maximum Req. 230W, AC/DC 90-245 VAC, full range @ 47-63Hz			Dual power supply (570W) - Redundant Auto Ranging (100V~240V)	
Environment	0-40C, storage temp 20-80C relative humidity 0-90% (non-con- densing)			0-40C, storage temp 20-80C relative humidity 0-90% (non-condensing)					0-40C, storage temp 20-80C relative humidity 0-90% (non-condensing)			0-40C, storage temp 20-80C relative humidity 0-90% (non-condensing)	
Approvals	CF, FCC Certified/RoHS			CF, FCC Certified/RoHS					CF, FCC Certified/RoHS			CF, FCC Certified/RoHS	



North America
1 877 439 4632

EMEA
+44 808 120 1996

Asia Pacific
+61 3 9415 8332

www.exinda.com