

# The Exinda 4061

Unified Performance Management for Medium/Large Branch Offices



## The Exinda 4061

Designed for medium to large branch offices, the 4061 model expands to support up to 250 Mbps worth of traffic and up to 1,000 users.

Built upon Exinda's new 64bit architecture, and featuring a multi queue network interface controller (NIC) combined with a multi threaded operating system (OS); this new model offers scalability and performance at a price that satisfies even the most cost-conscious buyers.

## The Challenge

Everyday more and more data is being pushed across our networks. Increased growth and reliance of web based applications, VoIP, streaming video and Internet usage have congested our networks and made them unreliable. Network users are spending more and more time waiting at screen (TWAS) as applications compete for finite resources over stressed, over-run networks. This proliferation of traffic has degraded our networks' speed and performance and resulted in productivity losses.

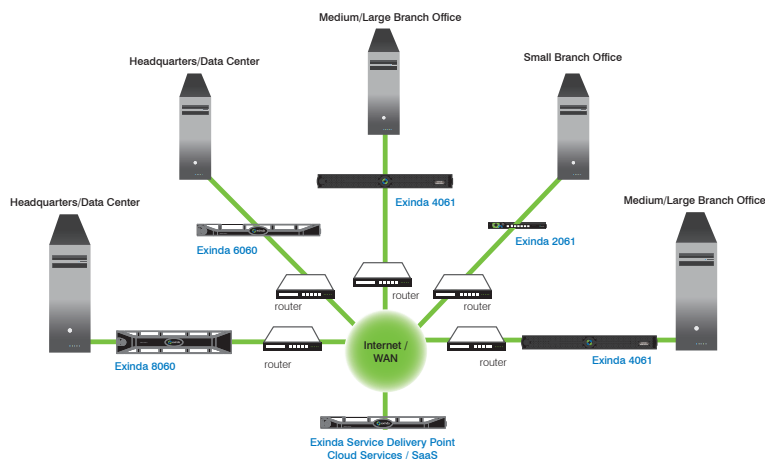
The challenge faced by IT professionals today, is how to gain visibility into the network, identify what applications and users are causing the congestion and put policies in place to ensure applications and data run smoothly over your network, despite the ever-increasing demand.

## The Solution

Exinda provide users with the best network experience possible by maximizing the speed and efficiency of applications over the network.

Exinda's unified performance management (UPM) solution brings together a suite of advanced, best-of-breed, visibility, traffic-shaping and WAN optimization technologies into a single, easy to-use appliance designed to improve network productivity.

Exinda is the only unified performance management solution on the market. Controlled through a seamlessly integrated, unified management console, Exinda reduces costs, increases revenue and allows you to get the most out of your network.



## Visibility

Make informed decisions on managing applications, user experience, and performance.

## Identification

- Layer 7 Classifications
- Heuristic Classification
- URL Classification
- Anonymous Proxy Detection
- Citrix Published Applications
- Active Directory User ID
- VoIP Codec

## Performance

- Application Performance Scoring
- VoIP Mean Opinion Scoring (MOS)
- Service Level Agreements
- Network Efficiency & TCP Health

## Reporting

- Drill Down Capabilities
- Real Time Monitoring
- Top Talkers/Top Conversations
- Automated PDF Reporting

## Control

Guarantee predictable application performance and improve user experience.

## Quality of Service

- QoS / Dynamic per IP / per User
- Application Predictability
- Bandwidth Guarantees & Limits
- Prioritization
- Traffic-shaping

## Fairness

- Bandwidth Management
- Active Directory Integration
- Dynamic Bandwidth Allocation
- Over-subscription

## Optimization

Improve application speed and user satisfaction.

## Protocol & Application

- Layer 4 TCP Optimization
- Layer 7 Application Acceleration
- SSL Acceleration

## Ease of Deployment

- Intelligent Flow Discovery
- Appliance Auto-Discovery
- Transparent (no tunneling)

## Caching

- Universal Caching
- Data Deduplication
- Compression
- Video Caching
- Dynamic URL Caching
- Software Update Caching
- Web Object Caching

## Exinda 4061 Hardware Specifications

Form Factor	19" 1U rack mount
Dimensions	431 x 42.6 x 393.7 mm, 17.1" x 1.67" x 15.50"
Weight	11.8 kg / 26 lb
CPU	Intel Pentium G850 2.90 GHz, 3M Cache, Dual Core/2T
RAM	4GB Memory (2x2GB), 1333MHz, Single Ranked UDIMM
HDD	500GB 7.2k RPM Serial ATA 3Gbps 3.5-in
Data Store / Cache Size	385GB
NICs (default)	2 x 10/100/1000 copper (onboard) + 2 x 10/100/1000 copper bypass (slot 1)
NICs (expandable to)	2 x 10/100/1000 copper (onboard) + 6 x 10/100/1000/10000 copper/fiber
Bridges/Bypass Pairs (default)	1
Bridges/Bypass Pairs (expandable to)	3
Interface NIC Slots	1
Console	RS-232 male DB-9
Power Supply Type	Internal, Fixed
Power Rating	Single power supply (345W), Auto Ranging (100V~240V)
Environment	0-40C, storage temp 20-80C relative humidity 0-90% (non-condensing)
Approvals	CE,FCC, Certified/RoHS

## Software Specifications

Licensed Bandwidth (full duplex)	x700 Software Visibility & Control								x800 Software Visibility, Control & Optimization						
	2	10	15	20	45	100	155	250	1	2	3	6	10	20	
Max. Device Throughput (Mbps)	10,000	10,000	10,000	10,000	10,000	10,000	10,000	10,000	10,000	10,000	10,000	10,000	10,000	10,000	
Max. Concurrent Flows	64,000	128,000	128,000	256,000	256,000	384,000	512,000	768,000	32,000	64,000	64,000	128,000	256,000	384,000	
Max. L7 New Conn Rate	300	300	300	300	300	300	300	300	300	300	300	300	300	300	
Reports (PDF)	4	6	8	10	16	20	20	20	4	6	6	8	10	12	
SLAs	70	100	100	120	120	150	150	150	40	60	60	80	100	120	
APS Objects	150	150	150	150	150	150	150	150	150	150	150	150	150	150	
Policies	128	256	256	384	384	512	512	512	128	128	128	256	256	384	
Edge Cache Max. Throughput (Mbps)	20	20	20	20	20	20	20	20	20	20	20	20	20	20	
Edge Cache Requests per Second	1,500	1,500	1,500	1,500	1,500	1,500	1,500	1,500	1,500	1,500	1,500	1,500	1,500	1,500	
									Optimized Connections*	1,000	1,500	1,800	2,000	2,500	3,000
									WAN Optimization (Mbps)	1	2	3	6	10	20
									Max WAN Shaped/QoS (Mbps)	2	15	15	15	45	155
									Disk Size (GB)	500	500	500	500	500	500
									Data Storage (GB)	385	385	385	385	385	385

## About Exinda ®

Exinda is a proven global supplier of WAN Optimization and Traffic Shaping products. The company has helped over 2,000 organizations in 80 countries worldwide to reduce network operating costs and ensure consistent application performance over the WAN. The Exinda Unified Performance Management (UPM) solution encompasses application visibility, control, optimization and intelligent acceleration – all within a single network appliance that is affordable and easy to manage.

### Global/US Headquarters

8 Faneuil Hall Marketplace  
3rd Floor  
Boston, MA 02109  
United States

+1 877 439 4632  
[info.usa@exinda.com](mailto:info.usa@exinda.com)

### APAC Headquarters

13 Harper Street  
Abbotsford VIC 3067  
Australia

+1 800 394632  
[info.apac@exinda.com](mailto:info.apac@exinda.com)

### EMEA Headquarters

Quatro House  
Lyon Way  
Camberley  
GU16 7ER  
United Kingdom

+44 1276 804804  
[info.emea@exinda.com](mailto:info.emea@exinda.com)